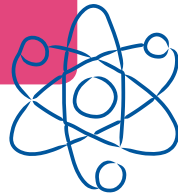


RATES FOR DAY CARE 2019

As of the 1st of January 2019, Korein Kinderplein uses the following rates¹². These rates do not take into account the benefits of the Dutch Tax and Customs Administration. The amount you ultimately pay is therefore lower than the monthly price as mentioned. The national standard¹ for day care is € 8,02.

52 weeks package

Product type	Hours per day	Hours per month	Gross hourly rate	Gross monthly rate
Full day ²	11,00	47,67	€ 8,08	€ 385,15
Part of the day ^{2,3}	5,50	23,83	€ 8,08	€ 192,57
Early/extended care ^{3,4}	7,50	32,50	€ 8,08	€ 262,60
Even and odd week care full day ³	11,00	11	€ 8,08	11



40 weeks package

(excluding school holidays⁵)^{2,6,8}

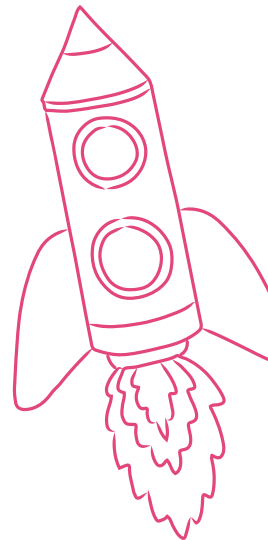
Product type	Hours per day	Hours per month	Gross hourly rate	Gross monthly rate
Full day	11,00	36,67	€ 9,68	€ 354,97
Part of the day ³	5,50	18,33	€ 9,68	€ 177,47

Flexible products^{3,7}

Product type	Hours per day	Hours per month	Gross hourly rate	Gross monthly rate
Extra child care per hour	not applicable	not applicable	€ 9,68	not applicable
Extra child care per day ²	11,00	not applicable	€ 9,68	not applicable
Extra child care per half-day ²	5,50	not applicable	€ 9,68	not applicable

Service products^{3,9}

Product type	Rates per instance	Monthly rates
Hot meal service 52 weeks ¹⁰	€ 3,40	€ 13,89
Hot meal service 40 weeks ⁶	€ 3,40	€ 12,37
Hot meal service occasional	€ 4,04	not applicable
Hairdressing service	€ 12,66	not applicable





IN ADDITION TO OUT-OF-SCHOOL CARE 2019

1. The national standard is the maximum hourly rate based on which the child care benefit from the Dutch Tax and Customs Administration is calculated.
2. You can make use of day care in full days (from 07:30 to 18:30) or in partial days. A morning lasts from 07:30 to 13:00 and an afternoon lasts from 13:00 to 18:30.
3. The availability of this service depends on the availability of the Korein Kinderplein.
4. Extended day care is from 7:30 to 15:00 and early day care is from 11:00 to 18:30.
5. The 12 weeks of school holidays include the following holidays: 1 week for autumn break, 2 weeks for the Christmas holidays, 1 week for spring break, 2 weeks for the May holidays, 6 weeks for summer vacation.
6. The 40-weeks package, excluding care during school holidays, is invoiced in 11 instalments. The monthly price and the number of hours a month will therefore not match the amount on the invoice.
7. You can request extra child care on your Korein Kinderplein.
8. At the 52- and 40-week packages, you choose one package for all the days that you use childcare.
9. The prices of these products include 9% VAT.
10. You pay for 49 weeks hot meal service instead of 52 weeks.
11. Even and odd weeks care is billed based on the actual calendar days per month.
12. The monthly amount on your invoice can differ from the gross monthly rate stated on our pricelist by a maximum of € 0,10.



**Want to know exactly what
you will be paying?**

You can make a [personal calculation](#) online.